



NordBau 2021 is coming
Reserve September 8 to 12 in your calendar

Buy tickets now

The brand new SR-30 Eagle



The brand new SR-30 Eagle
IMAGE SOURCE: Soilmec S.p.A.

3 August 2021, 14:05 by **Soilmec** (Europe)

The brand new SR-30 Eagle looks back at the rig's story and enhance itselfes. **Soilmec** small-sized drilling rigs made history by inaugurating a new era with the R-312 in 1995, with a winning formula offering a generous Diesel engine combined with a powerful rotary head. SR-30 Eagle inherits the best characteristics of the previous models and embodies performance, technology and attention to details. A benchmark rig for the small-diameter drilling works market, perfect to carry out works in residential areas/confined spaces and always ready to be moved to the next job site in a very short time.

SR-30 Eagle has been designed for operators

The brand-new SR-30 Eagle has been designed for operators. The cabin is compact with a perfect visibility that allows to have everything under control, it's complete with amenities such as air conditioning and an adjustable seat. The rig also comes with useful solutions, such as the high-pressure washer kit, the compressor kit and the tool shelf, aimed at making daily work on site easier.

The brand new SR-30 Eagle is a change maker



The brand new SR-30 Eagle is a change maker
Image source: Soilmec S.p.A.

SR-30 Eagle is a change maker. A modern&technological rig thanks to the product suite DMS 4.0, the most important factor to increase piling reliability through improved operations, control and automated drilling functions and proactive maintenance. DMS renovation includes widgets and components on work pages to personalize visualization and improve user experience and many excavation automatisms to optimize operators daily work. Among these, automatic return to the centre hole, anti-slack rope system, automatic auger lifting , auto-rotary and auto-drilling functions for CFA configuration

SR-30 Eagle: two different versions to satisfy your needs



SR-30 Eagle: two different versions to satisfy your needs
Image source: Soilmec S.p.A.

The rig is available in two different versions to satisfy your specific needs. The Standard Version, that can be transported complete with 4x9 kelly bar mounted on with a weight of less than 30 tons (66,138 lb). The SR-30 Eagle Upgraded version with a modular mast, the Soilmec segmental one. This solution allows switching to LHR and extended CFA configurations in a simple and cost-efficient way.

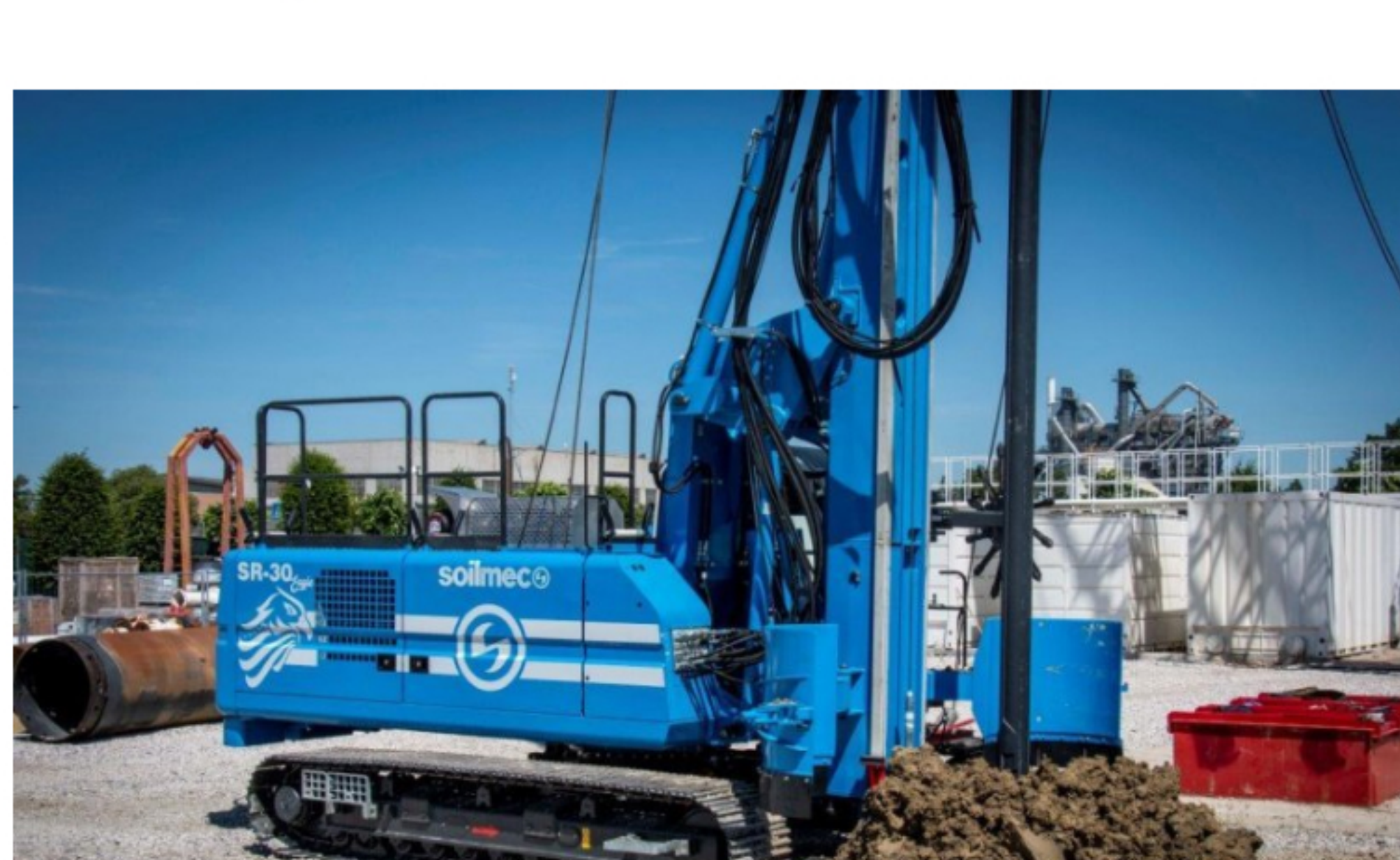
SR-30 Eagle: ready for the challenges to come!



SR-30 Eagle: ready for the challenges to come!
Image source: Soilmec S.p.A.

To better support the mechanical performance, the rig has been equipped with the latest generation StageV/Tier4f Diesel engine equipped with low-idle to improve fuel efficiency and decrease noise pollution. The 4.5-liter four-cylinders Cummins engine can deliver a maximum power of 149 kW (200 HP). Power and efficiency collaborates together for productivity improving: higher forces becomes available at the tool to improve the excavation. Indeforability under the hard working conditions and cabability to reach any challenging work, this is our Eagle.

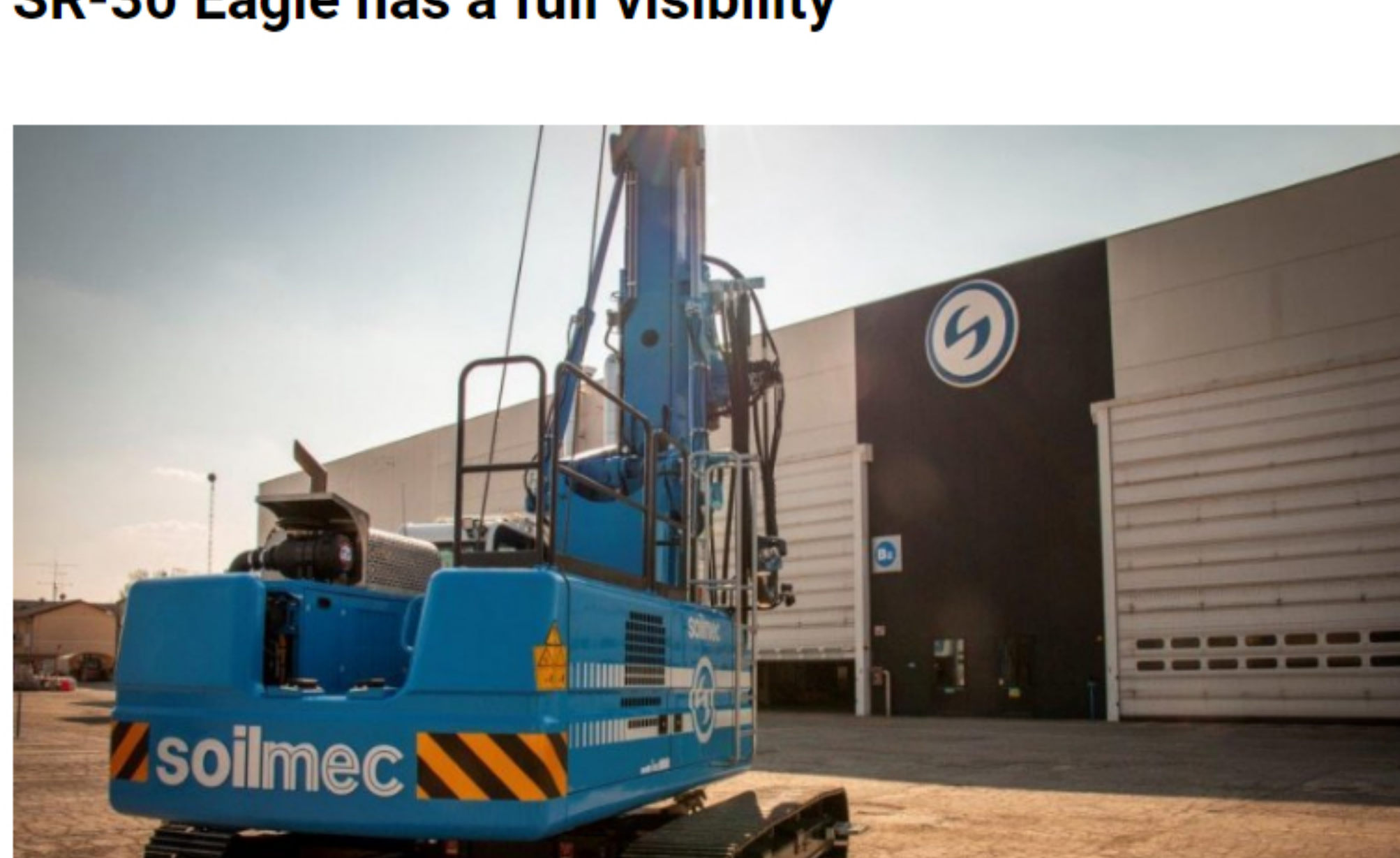
The brand new SR-30 Eagle can face the most demanding Jobsites



The brand new SR-30 Eagle can face the most demanding Jobsites
Image source: Soilmec S.p.A.

The brand-new SR-30 Eagle can face even the most demanding job sites. Despite its small dimension the strength of the mast has made it possible to install a rotary with a maximum torque of 131 kNm (96619 lbft), capable of optimizing torque and rotation speed during excavation thanks to the automatic control of motor displacement. Moreover, the rotary is provided with a new hydraulic block that has been redesigned for more efficient hydraulic performance and pressure losses.

SR-30 Eagle has a full visibility



SR-30 Eagle has a full visibility
Image source: Soilmec S.p.A.

Eagles Have Vision – The brand-new SR-30 Eagle has a full visibility above and below the ground. The job site area surrounding the rig is kept under control by large windshield, rear-view mirrors and camera system, complete with monitor in cab. The drilling performance are monitored by the DMS on Board that provide the operator the piles data in real time.

Source: Soilmec S.p.A.